



DESK SOLUTIONS



modulink



Commercial office desk constructed with a 25mm top and 18mm base with square corners. Ideal quick cam assembly. Optional drawer pedestals with slimbow handles can be added as shown in the pedestal range of the storage section. Ideally used with any of the Modulink screen systems.

RICO SLAB DESK MODELS:

MODEL	DESCRIPTION	LENGTH mm	DEPTH mm	HEIGHT mm
2001	1800mm long commercial office desk.	1800	800	725
2002	1600mm long commercial office desk.	1600	800	725
2003	1200mm long commercial office desk. Narrower depth of 600mm.	1200	600	725



OPTIONAL DESK RETURN



DRAWER PEDESTALS
(optional extra)

For details of finishes available with these models please refer to the Board & Fabric Finishes section of this catalogue.

For details of handles available with these models please refer to the Handles & Leg Systems section of this catalogue.



RETURN

Desk return that can be added to any of the standard Rico desks. 25mm top and 18mm base with square corners.

RICO RETURN DESK MODELS:

MODEL	DESCRIPTION	LENGTH mm	DEPTH mm	HEIGHT mm
2007	1200mm long desk return.	1200	600	725
2008	900mm long desk return.	900	600	725



DESK RETURN
FITTED TO DESK



Commercial L-shape desk. Tops constructed from 25mm and 18mm bases. All ideal for quick cam assembly. All have 40mm radius corners and are available with angled or curved keyboard areas. Desk top includes an 80mm diameter cable port. Ideally used with any of the Modulink screen systems.

RICO CORNER DESK MODELS:

MODEL	DESCRIPTION	LENGTH mm	DEPTH mm	HEIGHT mm
2010	25mm top, 18mm base, 600mm deep. Asymmetrical desk trays, longer on right.	1200/1800	600	725
2011	25mm top, 18mm base, 600mm deep. Asymmetrical desk trays, longer on left.	1800/1200	600	725
EXPRESS 2012	25mm top, 18mm base, 600mm deep. Symmetrical desk trays.	1800/1800	600	725
2013	25mm top, 18mm base, 700mm deep. Symmetrical desk trays.	1800/1800	700	725

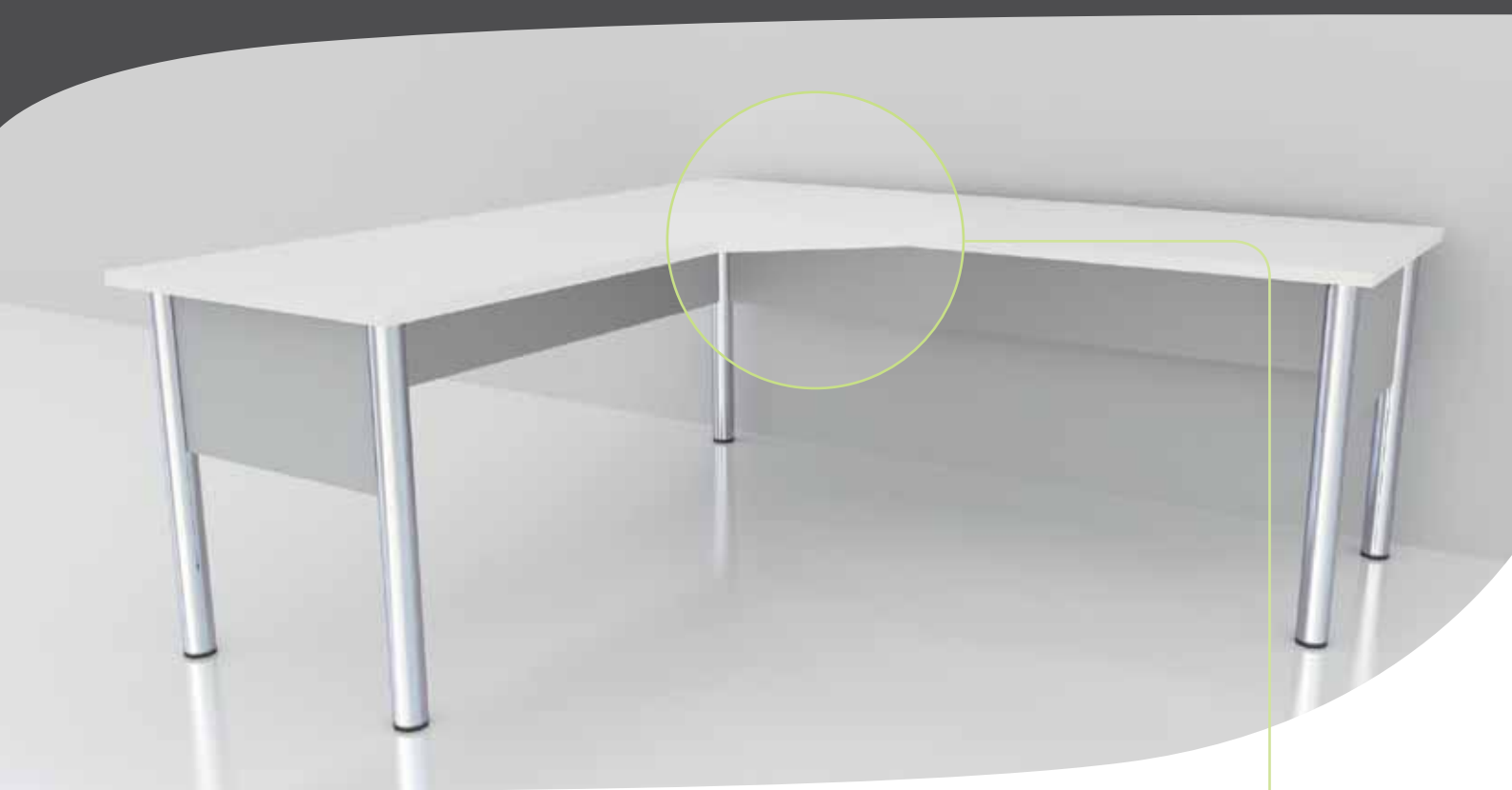


CURVED CORNER



ANGLED CORNER

For details of finishes available with these models please refer to the Board & Fabric Finishes section of this catalogue.



Commercial L-shape office desk constructed with a 25mm top, square corners and height-adjustable 60mm metal legs. Modesty panels between legs on four sides. Easy to assemble. Desk top includes an 80mm diameter cable port. Ideally used with any of the Modulink screen systems.

ELITE COPONE CORNER DESK MODELS:

MODEL	DESCRIPTION	LENGTH mm	DEPTH mm	HEIGHT mm
2100	600mm deep L-shape desk.	1800/1800	600	715 -740
2102	700mm deep L-shape desk.	1800/1800	700	715 -740



ANGLED CORNER



CURVED CORNER

For details of finishes available with these models please refer to the Board & Fabric Finishes section of this catalogue.



CURVED CORNER



ANGLED CORNER

Commercial L-shape desk with 40mm radius corners. 25mm top and base with angled or curved keyboard corner. All ideal for quick cam assembly. Desk top includes an 80mm diameter cable port. Ideally used with any of the Modulink screen systems.

ELITE CORNER DESK MODEL:

MODEL	DESCRIPTION	LENGTH mm	DEPTH mm	HEIGHT mm
2201	Commercial L-shape desk.	1800/1800	700	725



Commercial L-shape office desk constructed with a 25mm top. Height-adjustable metal legs available in Axis or Wishbone style. Easy to assemble. Desk tops are available with square PVC or sharknose edges and include an 80mm diameter cable port. Modesty panels available as an optional extra.

Best used with Modulink's F2 and M3 screen systems.

ELITE AXIS & WISHBONE CORNER DESK MODELS:

MODEL	DESCRIPTION	LENGTH mm	DEPTH mm	HEIGHT mm
2301	L-shape desk, PVC top and adjustable Axis legs.	1800/1800	600	700 -840
2302	L-shape desk, sharknose top and adjustable Axis legs.	1800/1800	600	700 -840
2401	L-shape desk, PVC top and adjustable Wishbone legs.	1800/1800	600	700 -840
2402	L-shape desk, sharknose top and adjustable Wishbone legs.	1800/1800	600	700 -840



AXIS LEGS



WISHBONE LEGS

For details of finishes available with these models please refer to the Board & Fabric Finishes section of this catalogue.



WISHBONE LEGS



AXIS LEGS

Commercial office desk constructed with a 25mm top. Height-adjustable metal legs available in Axis or Wishbone style. Desk tops are available with square PVC or sharknose edges. Easy to assemble. Modesty panel available as an optional extra. **Best used with Modulink's F2 and M3 screen systems.**

ELITE AXIS & WISHBONE DESK MODELS:

MODEL	DESCRIPTION	LENGTH mm	DEPTH mm	HEIGHT mm
2501	Straight desk, Axis legs.	1800	800	700-840
2502	Straight desk with sharknose edges, Axis legs.	1800	800	700-840
2503	Straight desk, Wishbone legs.	1800	800	700-840
2504	Straight desk with sharknose edges, Axis legs.	1800	800	700-840



Commercial office desk constructed with a 25mm top and height-adjustable 60mm metal legs. Modesty panels between legs on three sides. Easy to assemble. Ideally used with any of the Modulink screen systems.

ELITE CAPONE DESK MODEL:

MODEL	DESCRIPTION	LENGTH mm	DEPTH mm	HEIGHT mm
2505	1800mm long straight desk.	1800	800	715 -740

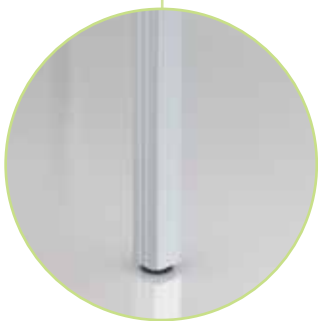


MODESTY PANEL



60MM POLE LEGS

For details of finishes available with these models please refer to the Board & Fabric Finishes section of this catalogue.



BEAM LEG



F5 SCREEN

Two-person desk with F5 screen system partitions and square legs. For more information about our F5 screen system please see the screen systems section of our product catalogue.

ELITE BEAM DESK MODEL:

MODEL	DESCRIPTION	LENGTH mm	DEPTH mm	HEIGHT mm
2601	Desk with Beam leg system.	1800	800	725 -875



Commercial office desk with conference end. 25mm top and 25mm base. Conference end available on visitor's or user's side, with left or right hand options.

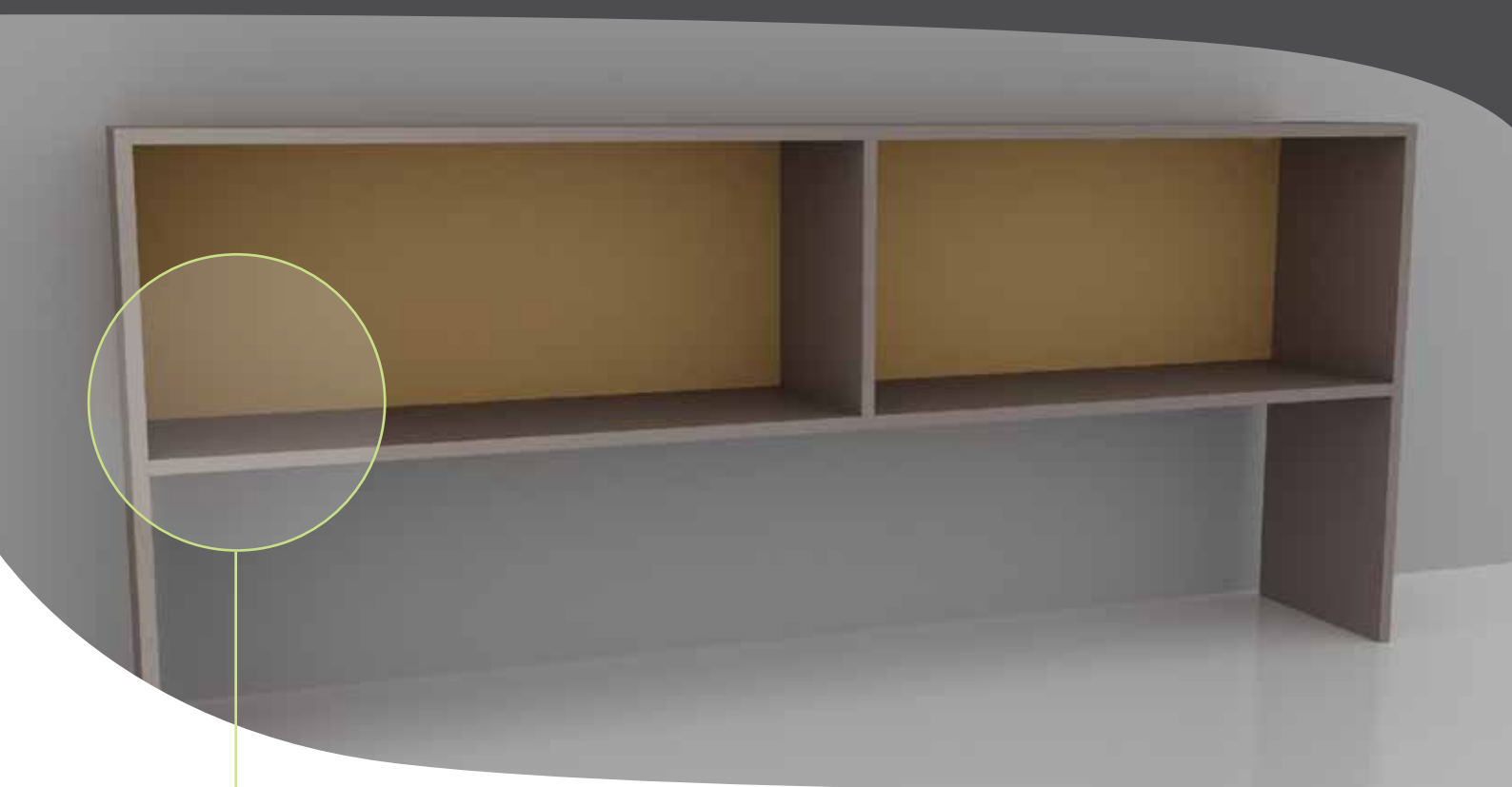
ELITE CONFERENCE END DESK MODELS:

MODEL	DESCRIPTION	LENGTH mm	DEPTH mm	HEIGHT mm
2605	Conference end left side of desk.	2400	800 /1000	725
2607	Conference end right side of desk.	2400	800 /1000	725



CONFERENCE END

For details of finishes available with these models please refer to the Board & Fabric Finishes section of this catalogue.



ADJUSTABLE SHELVES

Hutch shelving units for adding to Rico desks. All units constructed using 18mm board with 4.75mm MDF back. Two adjustable shelves and a centre division for support.

RICO DESK HUTCH MODELS:

MODEL	DESCRIPTION	WIDTH mm	DEPTH mm	HEIGHT mm
2801	1100mm hutch with two adjustable shelves. Suits 1200mm desk top.	1100	300	1080
2802	1400mm hutch with two adjustable shelves. Suits 1500mm desk top.	1400	300	1080
2803	1700mm hutch with two adjustable shelves. Suits 1800mm desk top.	1700	300	1080



DESK AND HUTCH



For details of finishes available with these models please refer to the Board & Fabric Finishes section of this catalogue.



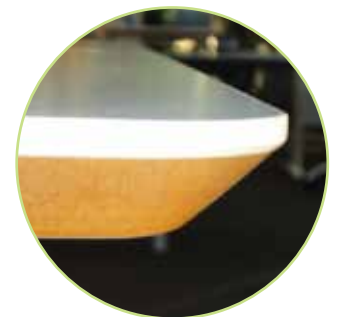
1800mm long electric rise and fall desk with 25mm top and modesty panel and silver powder coated legs. Desk has 70kg lifting capacity and an adjustable height range between 660mm and 1180mm. Height electrically adjusts at a speed of 25mm per second.

ELITE ELECTRIC RISE & FALL DESK MODELS:

MODEL	DESCRIPTION	LENGTH mm	DEPTH mm	HEIGHT mm
2901	Electric height adjustable desk with PVC square edge. Linear power supply, input 200-240 VAC 56/60 Hz.	1800	800	660 - 1180
2902	Electric height adjustable desk with sharknose edge. Linear power supply, input 200-240 VAC 56/60 Hz.	1800	800	660 - 1180

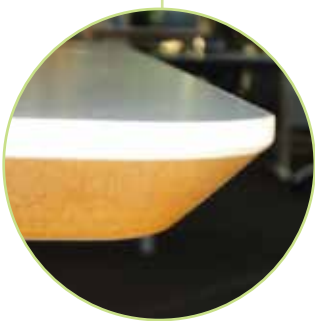


SQUARE PVC EDGE



SHARKNOSE EDGE

For details of finishes available with these models please refer to the Board & Fabric Finishes section of this catalogue.



SHARKNOSE EDGE

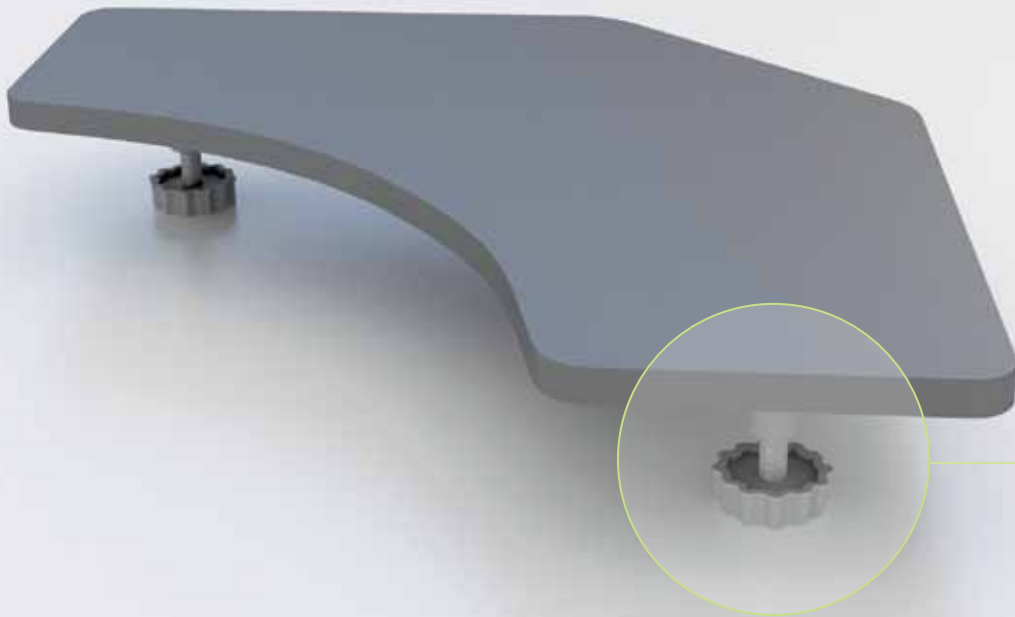


SQUARE PVC EDGE

1800mm long L-shape electric rise and fall workstation with 25mm top and modesty panel and silver powder coated legs. Desk has 70kg lifting capacity and an adjustable height range between 660mm and 1180mm. Height electrically adjusts at a speed of 25mm per second.



ELITE ELECTRIC RISE & FALL CORNER DESK MODELS:

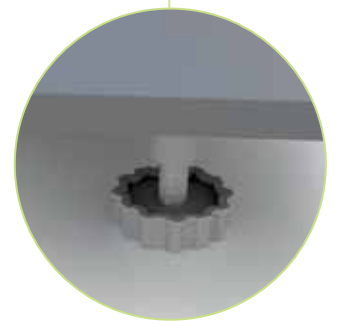
MODEL	DESCRIPTION	LENGTH mm	DEPTH mm	HEIGHT mm
2951	Electric height adjustable L-shape workstation with PVC square edge. Linear power supply, input 200-240 VAC 56/60 Hz. Output 30 VDC, 2 amp.	1800 /1800	700	660 - 1180
2952	Electric height adjustable L-shape workstation with sharknose edge. Linear power supply, input 200-240 VAC 56/60 Hz. Output 30 VDC, 2 amp.	1800 /1800	700	660 - 1180



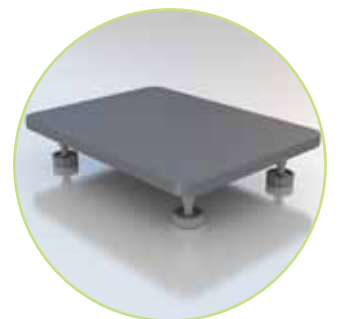
Monitor stand constructed with 18mm board and rounded corners. Stand has adjustable plastic feet.

MONITOR STAND MODELS:

MODEL	DESCRIPTION	LENGTH mm	DEPTH mm	HEIGHT mm
 9001	Straight monitor stand, 400mm long.	400	300	120-200
9002	Straight monitor stand, 800mm long.	800	300	120-200
 9003	Angle monitor stand, 800mm long (as shown above).	800	320	120-200



ADJUSTABLE FEET



STRAIGHT OPTION

For details of finishes available with these models please refer to the Board & Fabric Finishes section of this catalogue.